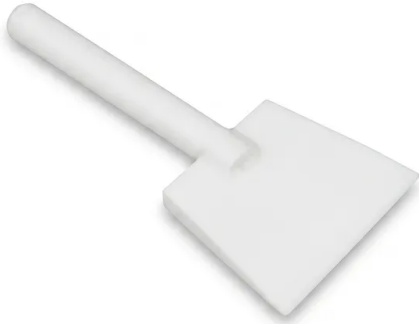


# Custom Acid And Alkali Resistant Ptfе Pharmaceutical Scoop For Bio-Pharma High Temperature Teflon Material Shovel

Item Number: PL-CP305



## Introduction

High-performance PTFE pharmaceutical scoops designed for bio-pharma and chemical processing. Featuring extreme acid-alkali resistance and 260°C temperature stability, these custom-engineered tools ensure contamination-free material handling in demanding laboratory and industrial environments.

[Learn More](#)

Application	Description	Key Benefit
<b>API Manufacturing</b>	Transferring active pharmaceutical ingredients during the synthesis and purification stages.	Zero risk of metallic or plastic contamination in the final product.
<b>Semiconductor Processing</b>	Handling ultra-pure chemical precursors and cleaning agents used in wafer fabrication.	High-purity PTFE prevents ionic contamination that could ruin microcircuits.
<b>Cryogenic Research</b>	Sampling materials stored in liquid nitrogen dewars or ultra-low temperature freezers.	Remains flexible and crack-resistant at temperatures as low as -200°C.
<b>Battery Technology</b>	Handling corrosive electrolytes and lithium-based powders for energy storage research.	Complete resistance to aggressive battery chemistries and salt solutions.
<b>Analytical Chemistry</b>	Precise measurement of reagents for trace analysis and environmental testing.	Non-stick surface ensures 100% material recovery and accurate measurement.
<b>Food &amp; Beverage Lab</b>	Sampling additives and concentrates that require food-grade, non-reactive tools.	Odorless, tasteless, and easy to sterilize via autoclaving or chemical agents.
<b>Hydrothermal Synthesis</b>	Preparing precursors for high-pressure and high-temperature material synthesis.	Temperature stability up to 260°C allows for direct use in heated prep zones.

Parameter	Specification Details (PL-CP305)
<b>Primary Material</b>	High-Purity Virgin PTFE (Polytetrafluoroethylene)
<b>Manufacturing Process</b>	Precision CNC Machined from Solid Stock
<b>Standard Length</b>	280 mm (Customizable upon request)
<b>Color</b>	Natural White (Opaque)
<b>Temperature Resistance Range</b>	-200°C to +260°C (-328°F to +500°F)
<b>Chemical Resistance</b>	Universal (Except molten alkali metals and elemental fluorine)
<b>Surface Roughness</b>	Ra < 0.8 μm (Typical for machined finish)
<b>Density</b>	2.14 - 2.20 g/cm³
<b>Customization Options</b>	Volume, Handle Diameter, Handle Length, Blade Geometry
<b>Sterilization Compatibility</b>	Autoclave, ETO, Gamma, and Chemical Disinfectants